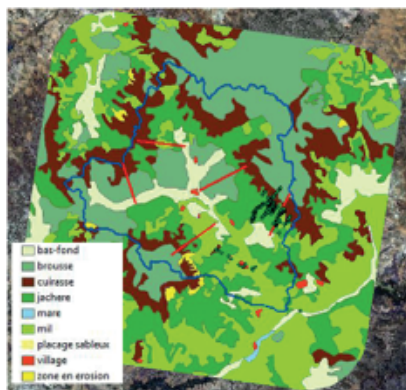


Systemes d'Information à Réference Spatiale (SIRS) SAS



SIRS is a French innovative SME specialized in the provision Earth Observation based solutions. It is a fully independent private company established in 1989. Over the last 25 years, SIRS has acquired a significant capacity in the development of operational services and the management of large-scale geographical information production projects over extended geographical areas. There are currently about 40 staff working for SIRS.

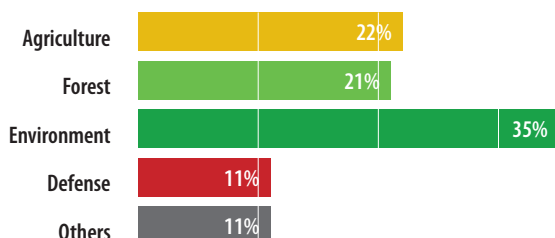


Satellite Image Interpretation for ecosystem modelling in Niger

SIRS main activities are in:

- Land cover/use mapping for urban planning and environmental monitoring,
- Habitat cartography (Natura 2000),
- Crop inventory and controls,
- Defense geographic data production,
- Forestry inventory and cartography, tree management

SIRS activities



SIRS masters the production of geographical information at all scales from the acquisition of in situ (field) data with teams of foresters and ecologists specialized in forest and biodiversity inventories, to processing and information extraction of airborne and satellite sensors.

SIRS is a major service provider for the Copernicus Programme (<http://www.copernicus.eu>) with the implication in the production of the following core services:

- Copernicus **Land** Core Service (<http://land.copernicus.eu>)
 - o Pan European Component:
 - Corine Land Cover production for France in 1990, 2000, 2006 & 2012
 - High Resolution layer on imperviousness degree for Western and Central Europe (2.5 million km²)
 - o Local component:
 - Urban Atlas 2006: detailed land cover mapping (1/10,000 scale) for 305 major European urban areas (all country capitals and settlements with population > 100,000 inhabitants)
 - Urban Atlas 2012: update and extension of Urban Atlas 2006 to urban areas with population >50,000 inhabitants (693 in total over more than 1 million km²)
- Copernicus **Emergency** Management Service (<http://emergency.copernicus.eu>): SIRS is involved in the consortium selected for the delivery of rush and non-rush services for major natural disasters with provision of map products within 6 hours of activation of services for reference map and between 3 to 24 hours for post-event map.
- Copernicus **Security** Service (<http://externalaction.security-copernicus.eu/projects-overview/g-next/g-next-nut-shell>): Pre-operational service in support of EU external actions; FP7 GNext project for which SIRS is involved in the project as service provider for the delivery of rush services for reference and post-event mapping related to population and infrastructure security (large population gathering, humanitarian crisis,...)

SIRS is also involved in large R&D projects in the forest monitoring/biodiversity/Payment for Ecosystem services sector: **ESA GSE FM REDD Extension, FP7 REDDAF, CNES SLCS Carbone** in Africa and South America to produce forest cover and degradation mapping products for large areas or entire countries (Gabon).

SIRS has been or is currently involved in 5 FP7 projects: **GeoFair-Trade, PanGeo, REDDAF, Urban Nexus and GNext.**

<http://www.sirs-fr.com>